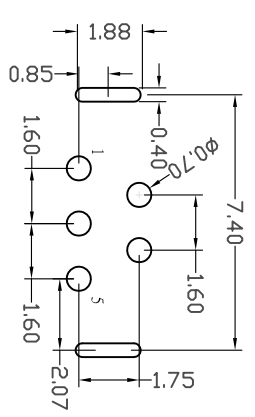
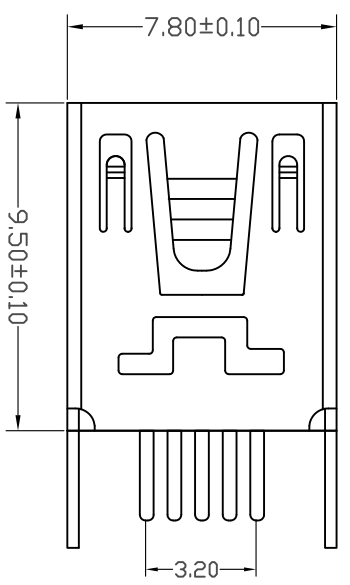
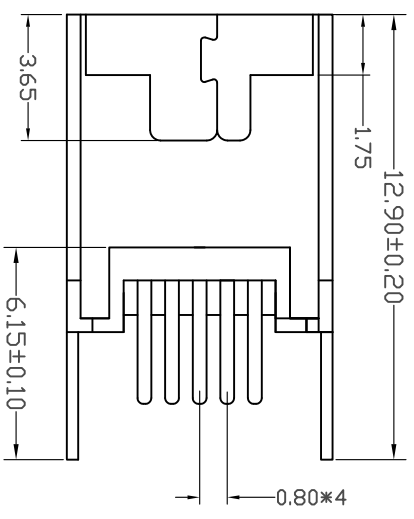
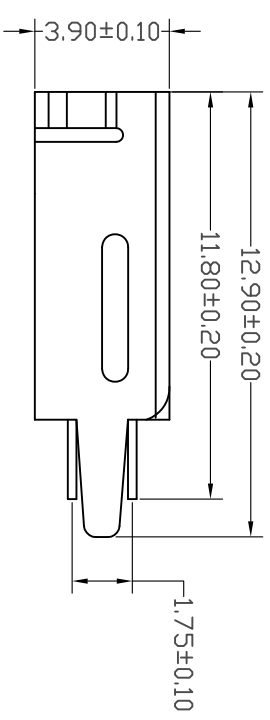
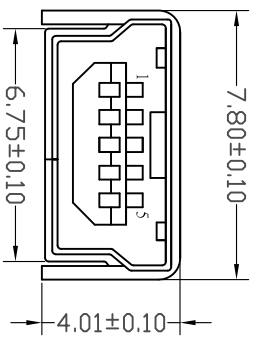


記號 MARK	設 變 內 容 MODIFICATION	日 期 DATE	修 改 DRAW	核 准 APPROVE
▲				



RECOMMENDED PCB LAYOUT



特性 : Specifications:  
电 器 : Electrical:

接触阻抗 : Contact Resistance 30 milliohms MAX

耐电压 : Dielectric Withstanding Voltage: 500V AC AT Sea Level

绝缘阻抗 : Insulation Resistance: 100 MEGA ohms MTN

材料 : Material:

塑胶 : Housing:Hing Temperature Thermoplastics,LCP 耐高温塑胶

端子 : Contact :Copper Alloy铜合金

铜壳 : Shell:copper Alloy铜合金

电镀 : Finish:

端子 : Contact:Plated Gold in Mating Area ;Tin ON Solder Tails

接触点镀金 , 脚镀锡

铜壳 : Shell:

Nickel/Plating 镀镍

UNITS: OTHERWISE SPECIFIED TOLERANCES ARE	UNIT: MM	TYPE:	MODEL NO:	PAPER NO: A4	PAGE 1 OF 1
X .X° ±3.0°	Ø	MINI USB 5Pin/F B	MU-2F0511-XB		SCALE
.XX ±0.20	▽	TYPE 180° DIP H:9.5			VER
.XXX ±0.10					1
X.X° ±2.0°					
.XXX ±1.0°					
DESIGNER BY:					
CHECK BY:					
APPROVED BY:					

丞 永 實 業 有 限 公 司  
BLUE SOURCES ELECTRONICS CO.,LTD.